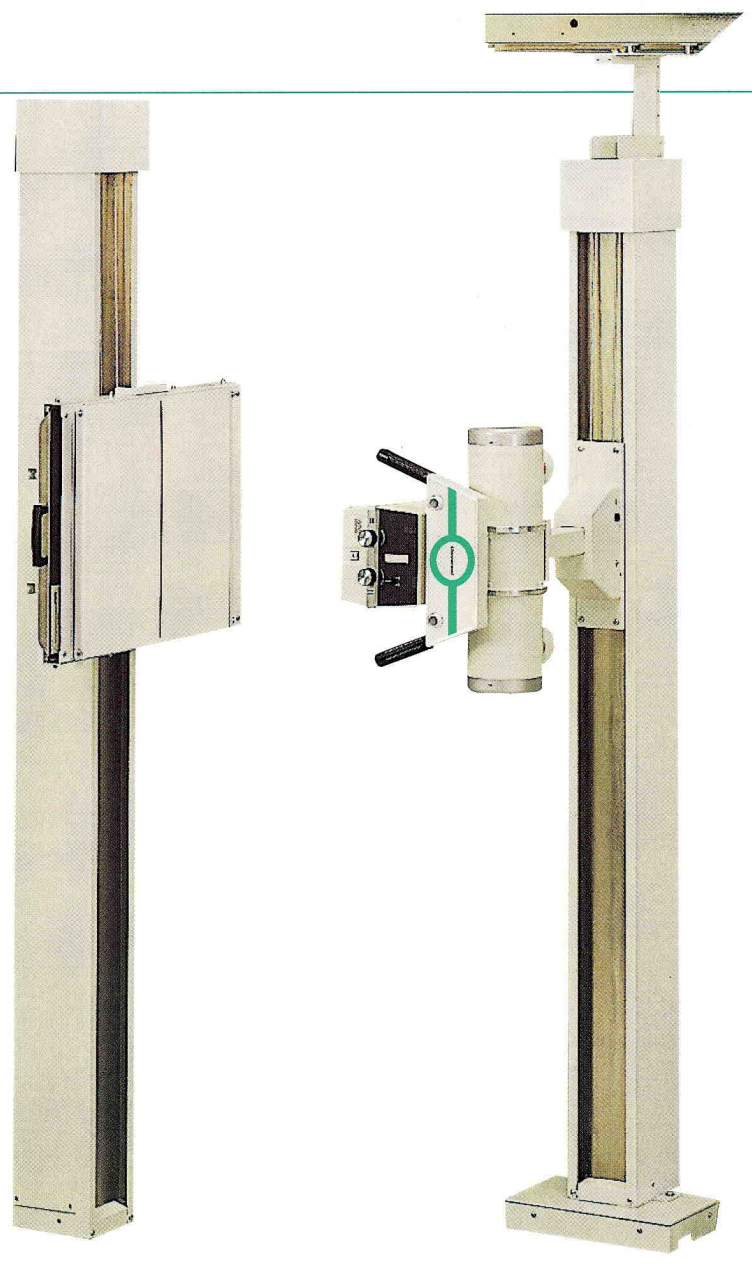
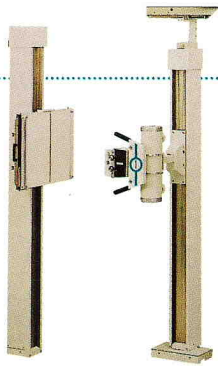


# Upright Raymaster System

Upright Raymaster System



**Universal**



## Upright Raymaster System

Universal uniquely combines economy and flexibility in a system designed to meet specialized and individual professional radiographic needs. The Universal Raymaster system is thoroughly at home in private, group, or clinical applications. It provides full radiographic capabilities, from skull to weight bearing studies.

### Standard Features:

#### Tubestand:

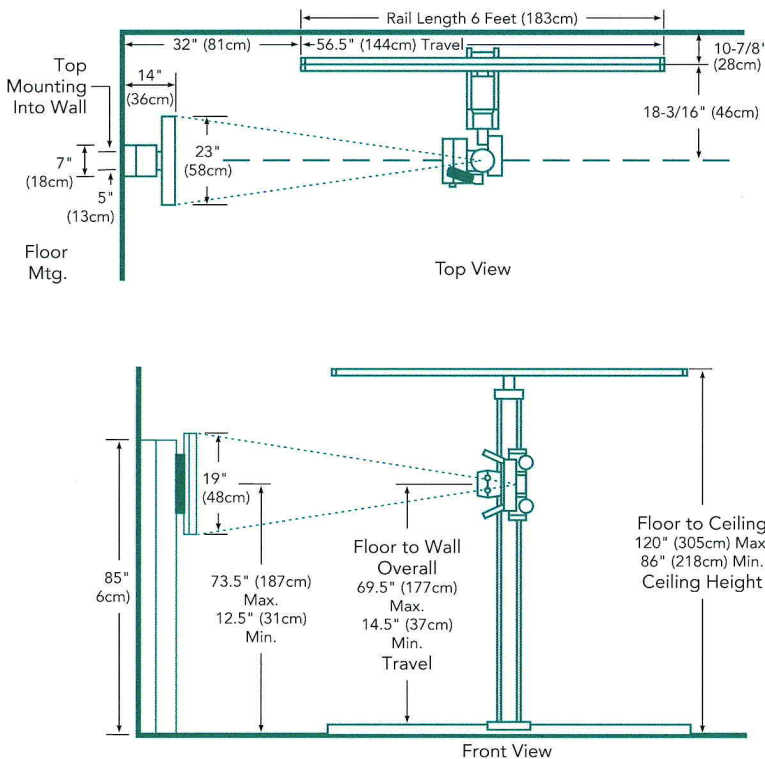
- Mounts floor-to-wall or floor-to-ceiling
- Tube rotation enables precision alignment of the tube for non-angled, angled and upright views
- Convenient display gives indication of tube rotation
- 6' (183 cm) tracks allows for 40" (100 cm) and 72" (180 cm) film distances
- Stainless steel bearings assure smooth vertical and horizontal tubestand movement
- Electro magnetic locks provide positive positioning of vertical and horizontal tubestand positions

#### Vertical Wall Stand:

- Fully counterbalanced for effortless movement
- 17" x 17" (43 cm x 43 cm) grid cabinet
- Low absorption front panel with patient centering line
- 103 Line, 8:1 fine line grid for superior film quality
- Manual cassette tray accepts 14" x 17" (35 cm x 43 cm) and smaller film sizes, both inch and metric
- Mechanical lock maintains cabinet height
- Extensive vertical travel of 61.3" (155 cm) allows for views from skull to weight bearing

#### Options:

- Choice of high frequency and single phase generators to meet specific needs and budget
- Stationary, 2-way and 4-way float top fixed height and elevating tables
- 8' (244 cm) or 12' (366 cm) tubestand tracks for use with optional tables
- 17" x 17" (43 cm x 43 cm) bucky for wall stand
- 10:1 or 12:1 ratio grid for wall stand
- Electro magnetic locks for wall stand
- Size sensing cassette tray for use with PBL collimation
- Ion chamber to accept AEC capability of generator
- 14" x 36" (35 cm x 91 cm) grid cabinet or reciprocating bucky for wall stand (Model 3547)



Complies with all CDRH performance standards in effect at the date of manufacture.

As we strive for constant improvement, specifications are subject to change without notice.

Made in U.S.A. - UL Classified—An ISO 13485 Certified Facility

**Universal**

[www.delmedical.com](http://www.delmedical.com)

Serving the Medical Profession for Over 75 Years.

11550 West King Street ■ Franklin Park, IL 60131 ■ Phone 847.288.7000 ■ Fax 847.288.7011 ■ Toll Free 800.800.6006

